

Brief

Designing a system to manage crowd at public places in the times of COVID-19

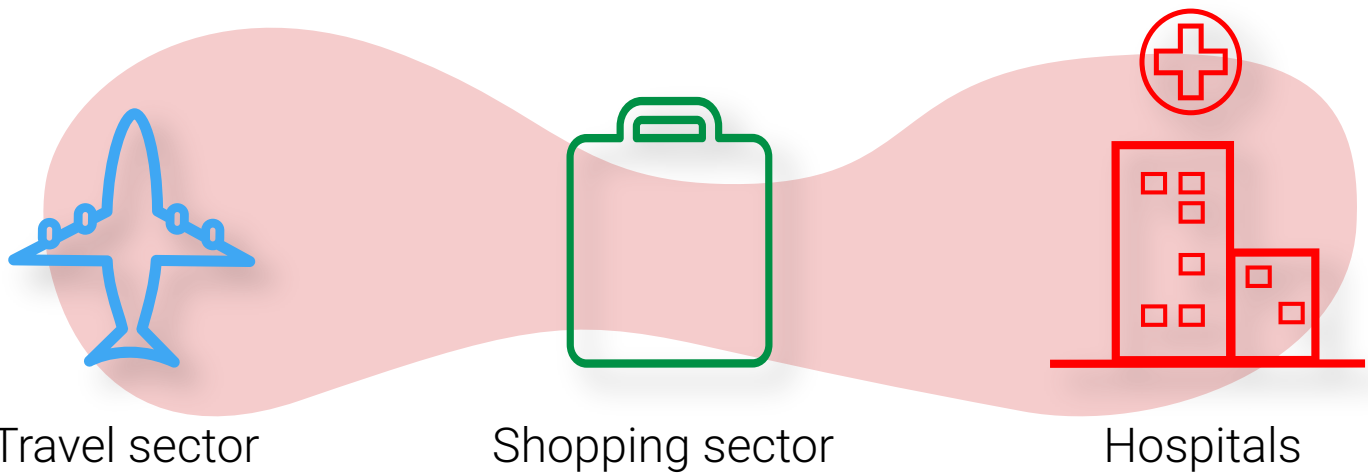
Situation

Covid-19 has impacted millions around the globe directly and indirectly. The only preferable and proven option during these times have been the lockdowns. But it cannot be a permanent solution for people need to go out and sustain. There is thus a need to mitigate the risk that is out there. People have to be and in the unfamiliar futures will have to be managed at the common public spots. The Crowd Ludo aims at managing possible crowd at public spaces to avoid spread of the virus and allow humans to take a step forward against the uncalled happening.

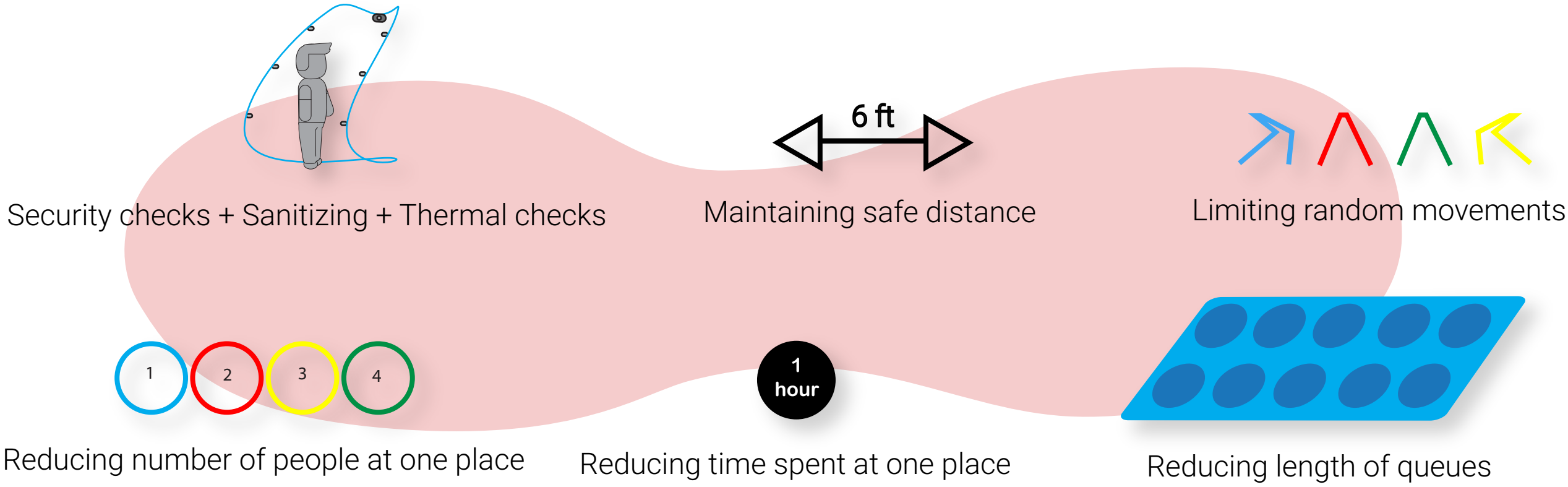
Scope The design adopts the game of LUDO and primarily brings the idea to divide the crowd into 4 designated groups in order to reduce the crowd at these public spaces, giving each person a clear indication about how to proceed. Here every player or person plays a game to reach a certain destination by following rules and regulations set by the authority.

Research

Concentrated public spaces



Solution spaces:
Common requirements in each sector that we understood.



Categories

- Travel
- Shopping
- Hospitals
- Recreational (Rest, Movies, Shopping)

Way finding optimization.

- Signage markers (Symbols)
- Make the journey
- No too much info
- Shorter & clearer way
- Mark the points of the way
- Consistency in signage

Queue management - Lines

Color

- Use of limit people in a box

Fast Pass

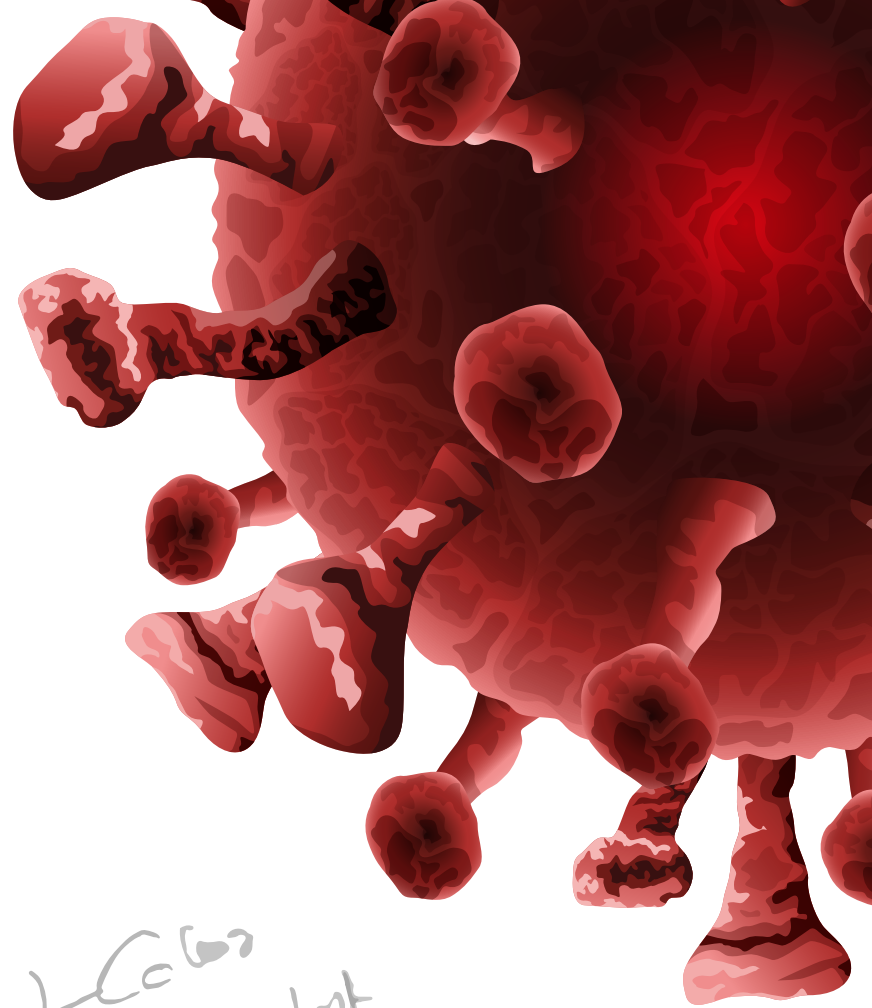
- Multiple entries
- Digitalising procedures

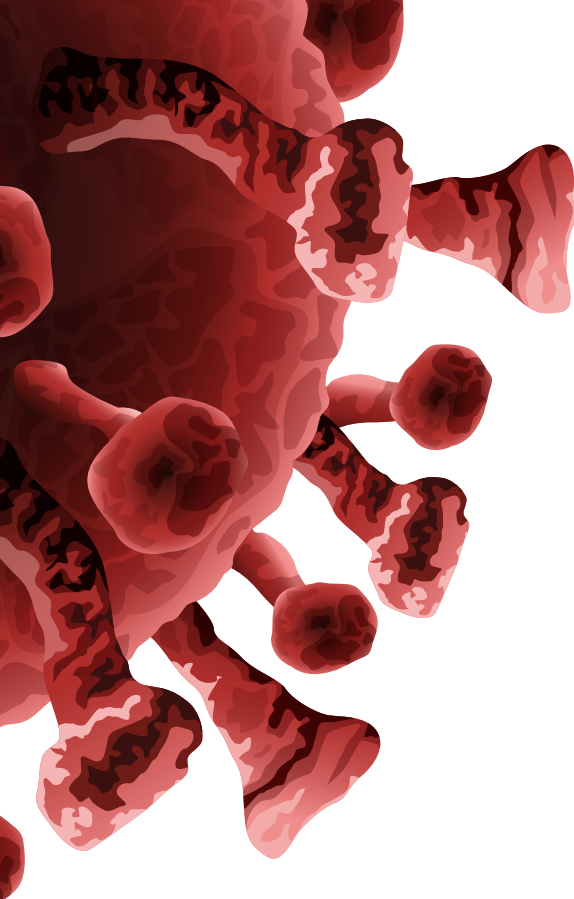
Govt. App

- Color theory (Designation).
- Segregation

Government App

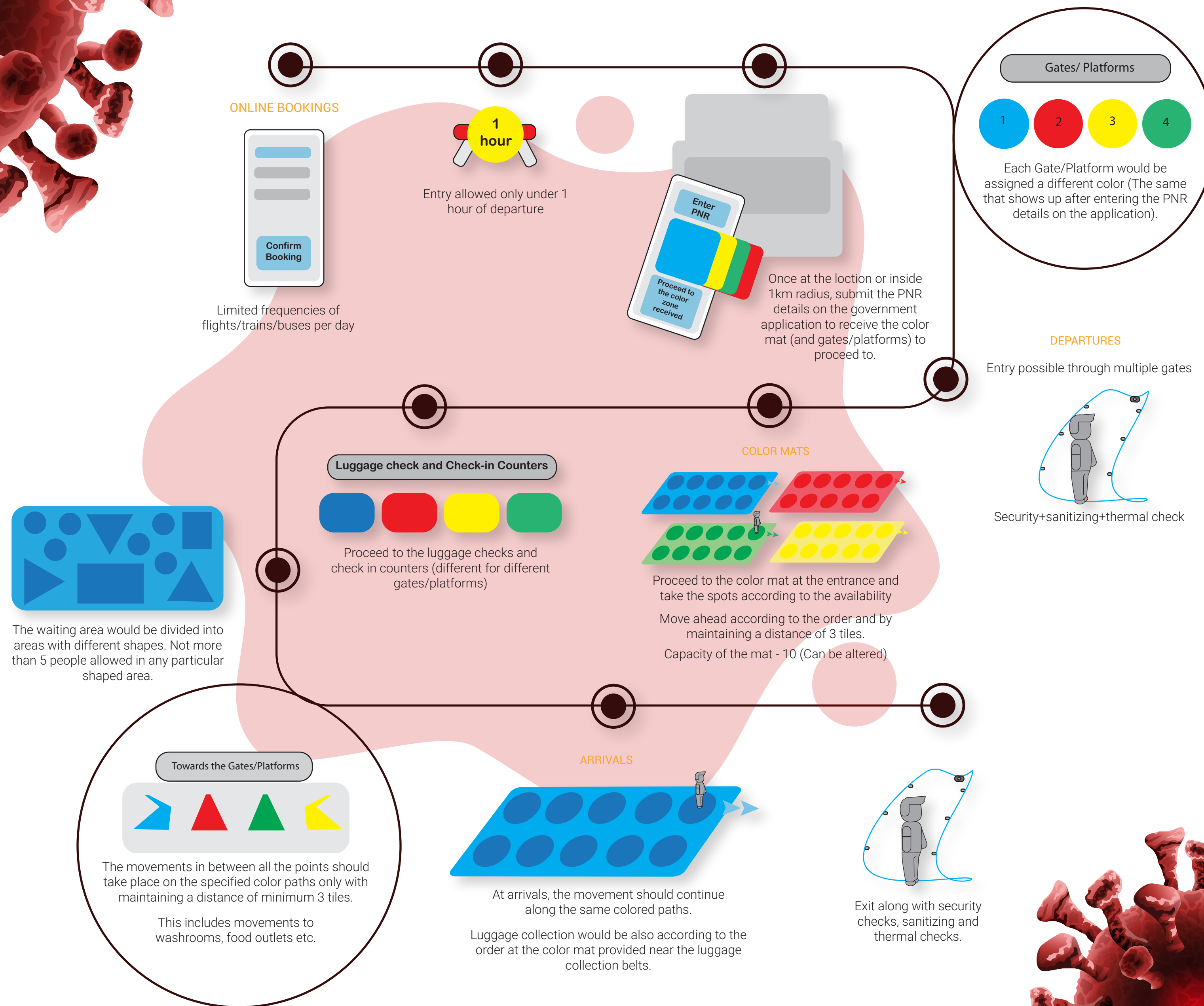
Use of a common digital medium can act as a guide to the operating procedures for each nominated sectors. A centralised Government application can play the perfect role here.



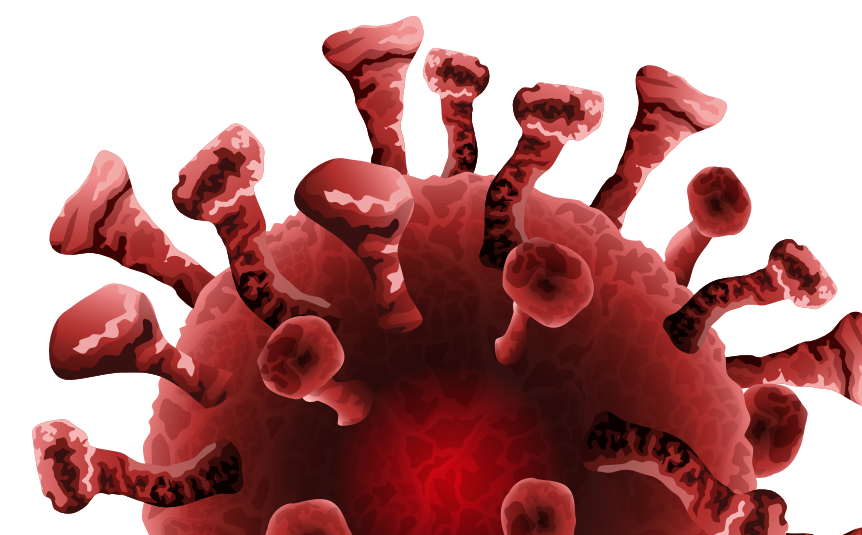
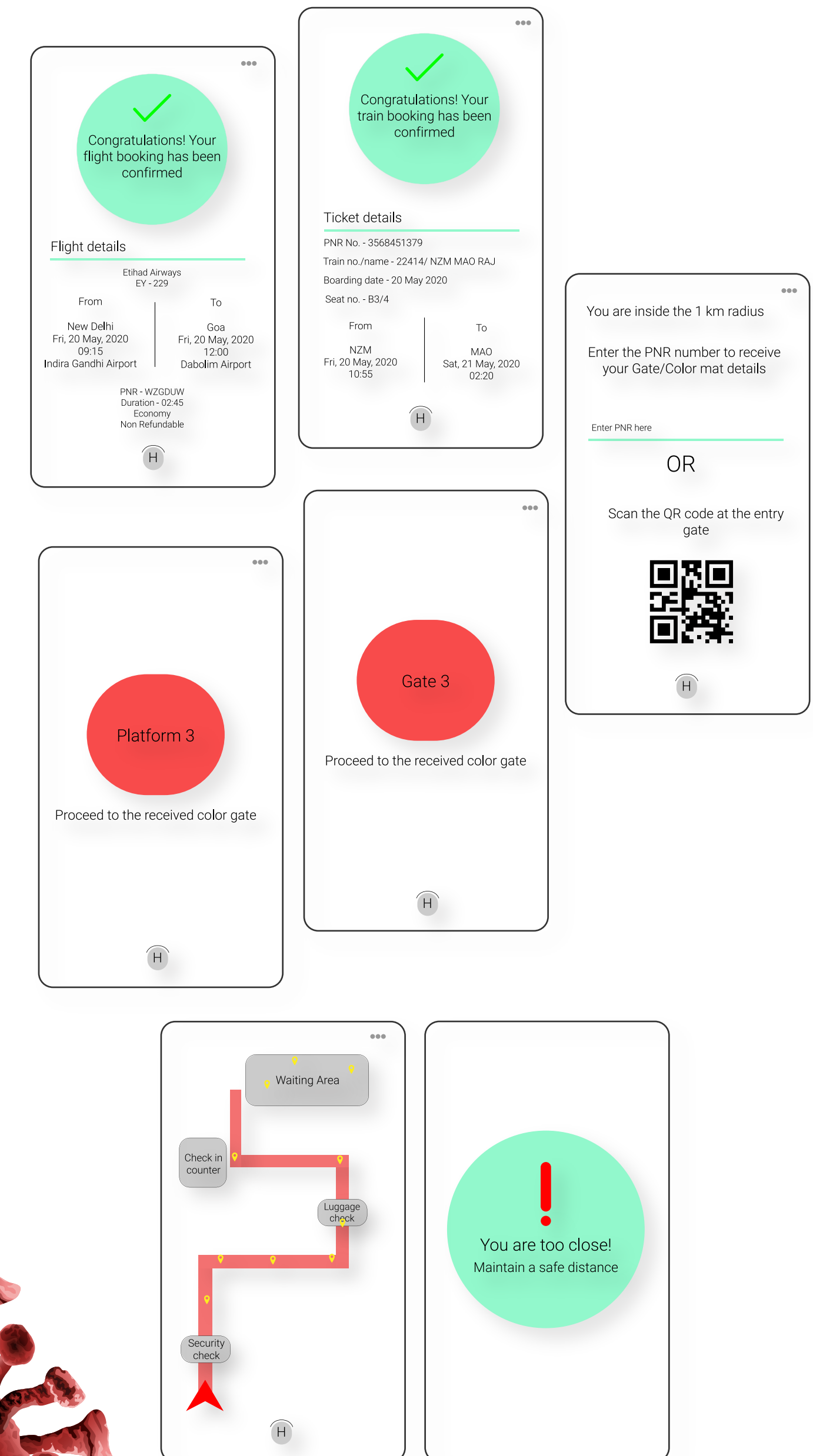


Standard Operating Procedure for travel sectors

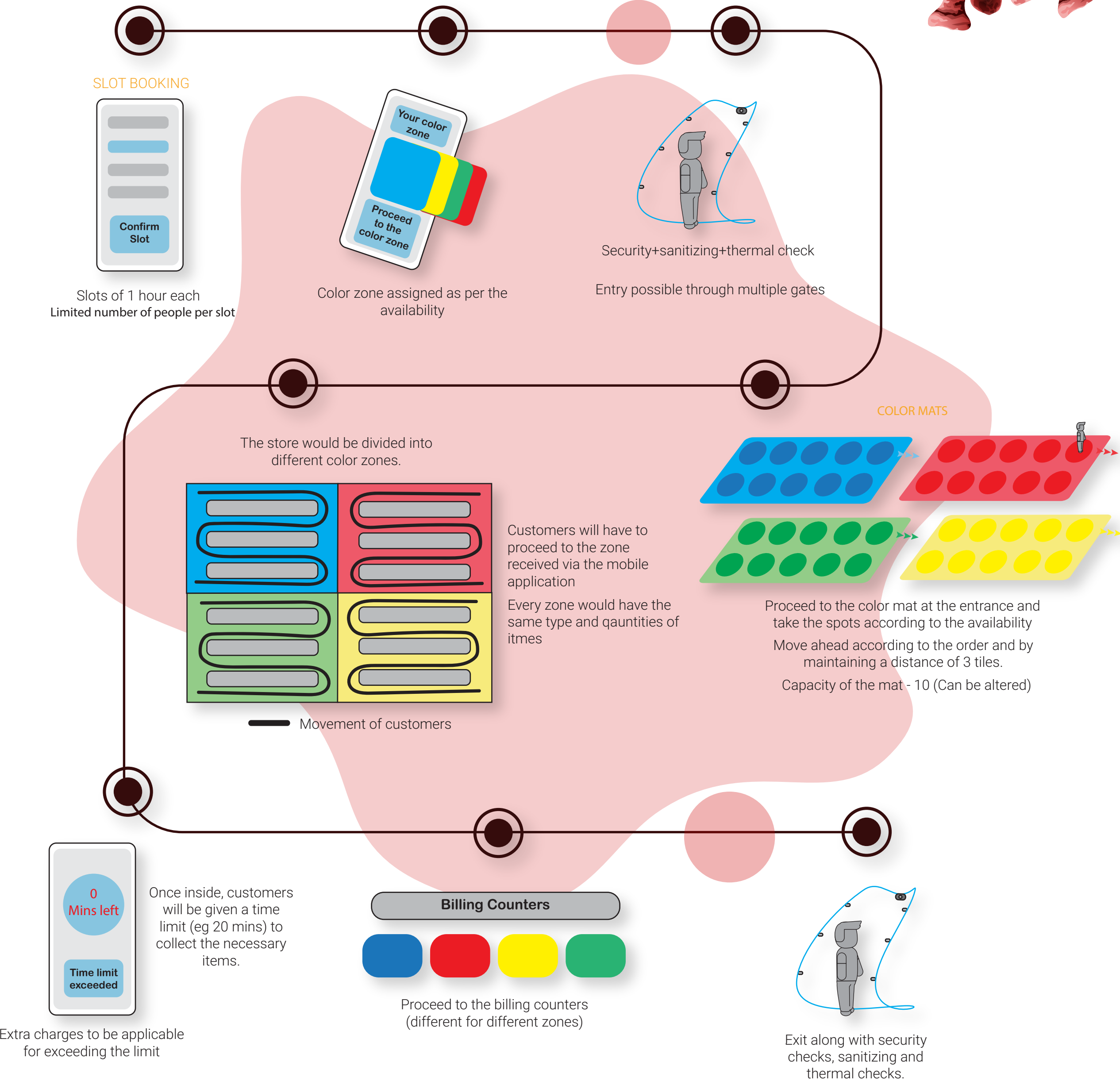
Includes flights, trains and buses



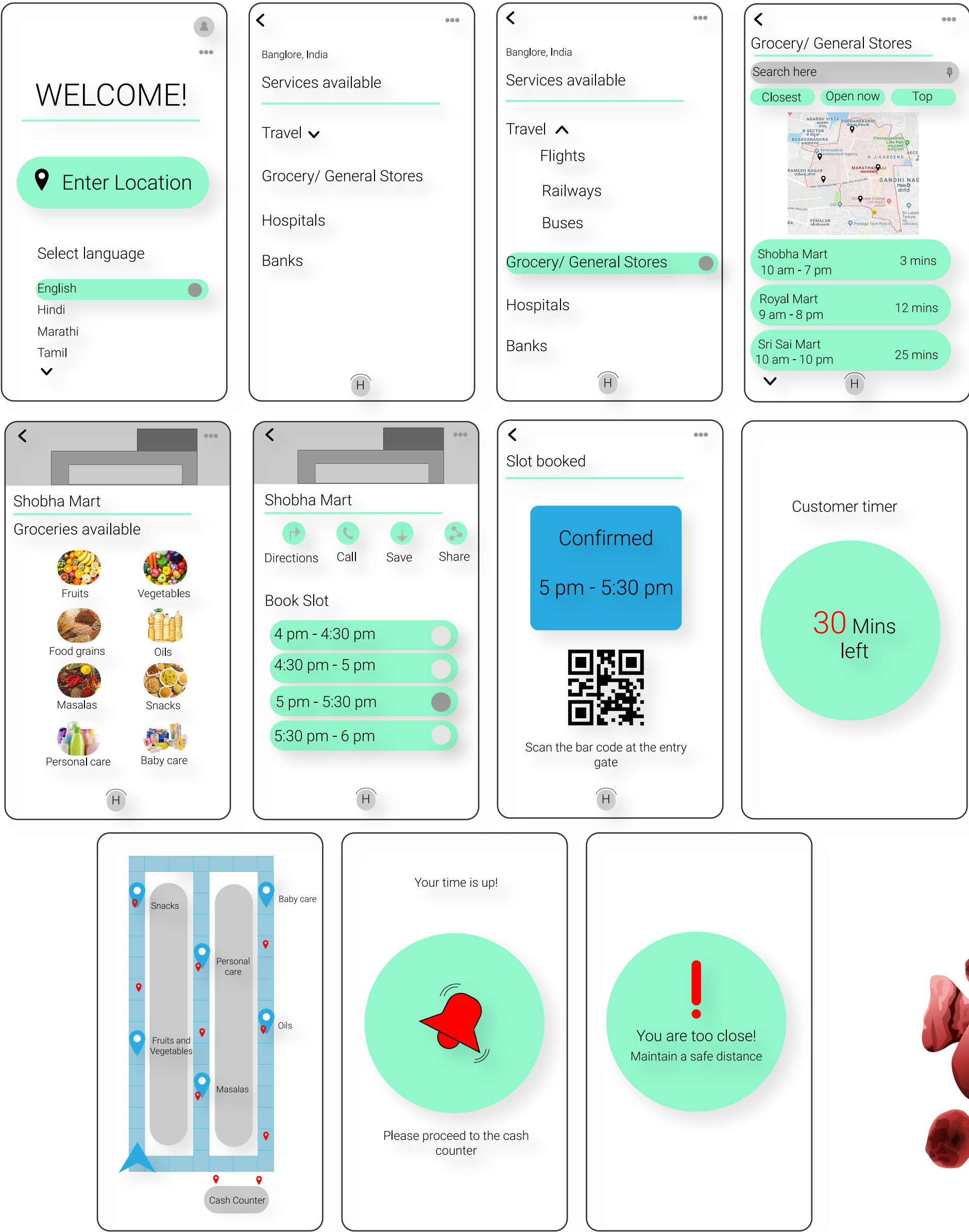
Interface for the centralised Government app

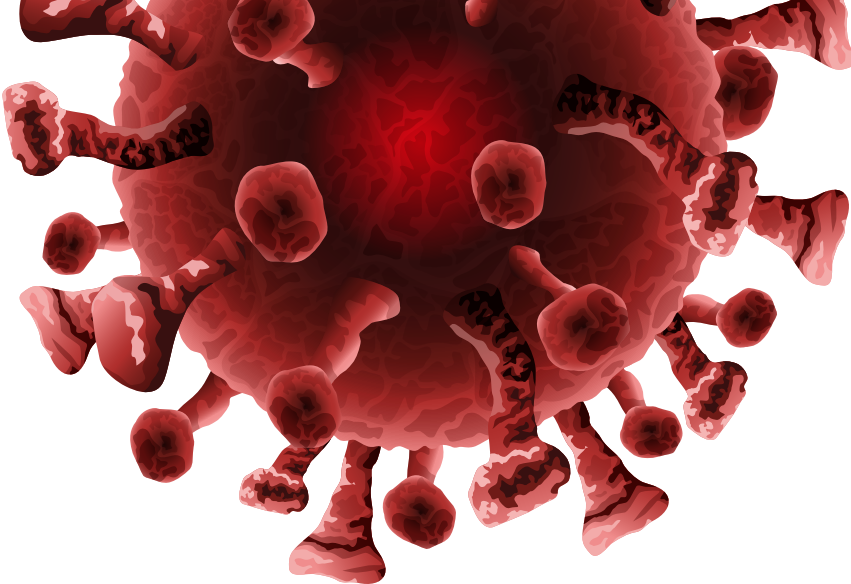


Standard Operating Procedure for shopping sectors

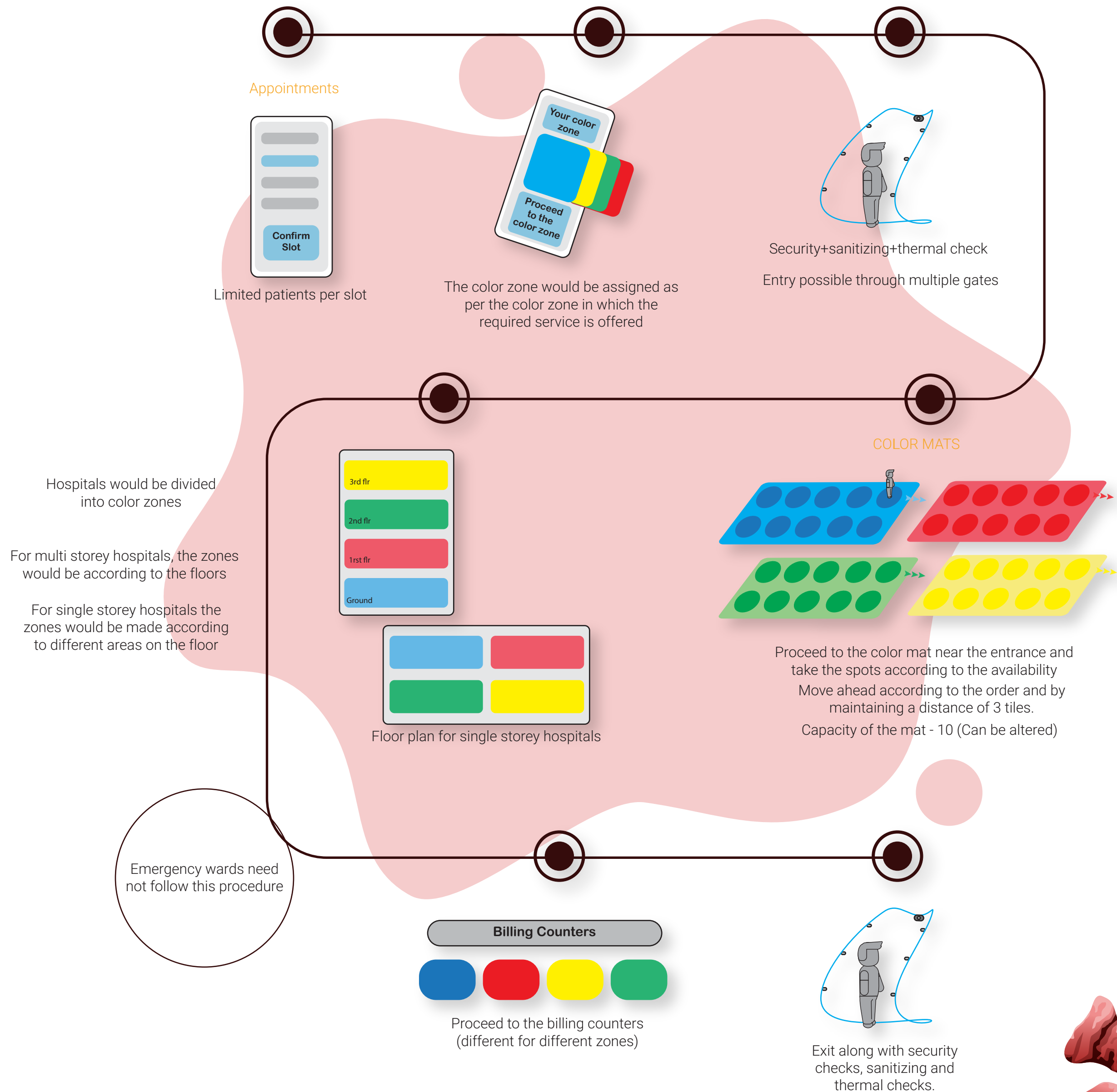


Interface for the Government app





Standard Operating Procedure for hospitals sectors



Interface for the Government app

Hospitals/Clinics

Search here

Closest Open now Top

Sunshine Global Hospital Open 24hrs 3 mins

Nirmal Hospital Open 24hrs 12 mins

Care Hospital Open 24hrs 25 mins

Sunshine Global Hospital

Directions Call Save Share

Book Appointment

General Checkup

Orthopedic department

Pediatric department

Cardiology department

Sunshine Global Hospital

Choose Appointment Date

May 2020

| | | | | | | |
|----|----|----|----|----|----|----|
| S | M | T | W | Th | F | Sa |
| 31 | | | | | 1 | 2 |
| 3 | 4 | 5 | 6 | 7 | 8 | 9 |
| 10 | 11 | 12 | 13 | 14 | 15 | 16 |
| 17 | 18 | 19 | 20 | 21 | 22 | 23 |
| 24 | 25 | 26 | 27 | 28 | 29 | 30 |

Sunshine Global Hospital

Available Slots

11 am - 12 pm

2 pm - 3 pm

3 pm - 4 pm

4 pm - 5 pm

5 pm - 6 pm

You have booked an appointment

Appointment details

Date: 15 May 2020

Time: 4 pm - 5 pm

Department: Pediatric

Scan the QR code at the entry gate to receive your color mat

Gate 3

Proceed to the received color gate

Department B

Department C

Department A

Department D

Admin Desk

